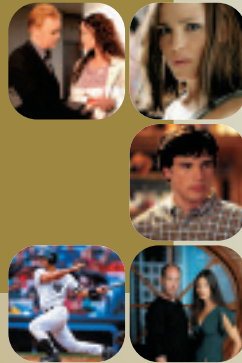


a week at a glance

MON-FRI
12:30

The Young
and the
Restless **CBS**



MON

8:00

Yes, Dear **CBS**

TUE

8 Simple Rules (5.1)* **ABC**
Navy NCIS **CBS**
Whoopi **NBC**
Gilmore Girls **WB**

WED

My Wife and Kids (5.1) **ABC**
Star Trek: Enterprise **UPN**
Smallville **WB**

THU



Like Family **WB**

FRI

George Lopez (5.1) **ABC**
Joan of Arcadia **CBS**
Reba **WB**
UPN Movie Friday
(when available) **UPN**

8:30

Still Standing **CBS**

I'm with Her (5.1) **ABC**
Happy Family **NBC**

It's All Relative (5.1) **ABC**

The Big House (5.1) **ABC**
What I Like About You **WB**

9:00

ABC Movie of the Week (5.1) **ABC**
Everybody Loves Raymond **CBS**
Las Vegas **NBC**
Everwood **WB**

According to Jim (5.1) **ABC**
Century City/The Guardian **CBS**
Frasier **NBC**
One Tree Hill **WB**

The King of Queens **CBS**
The West Wing **NBC**
Angel **WB**

CSI:
Crime Scene Investigation **CBS**

Hope & Faith (5.1) **ABC**
JAG **CBS**

9:30

Two and a Half Men **CBS**

Less Than Perfect (5.1) **ABC**

The Stones **CBS**



10:00

CSI: Miami **CBS**

NYPD Blue (5.1) **ABC**
Judging Amy **CBS**
Law & Order:
Special Victims Unit **NBC**

Kingdom Hospital (5.1) **ABC**
Law & Order **NBC**
Soul Food **SHO**

Without a Trace **CBS**
ER **NBC**

Third Watch **NBC**

Life with Bonnie (5.1) **ABC**
The Help **WB**

5:00



One Tree Hill **WB**

6:00



Everwood **WB**

7:00



American Family **PBS**

8:00

The Wonderful World
of Disney (5.1) **ABC**
The Tracy Morgan Show /
NBC Saturday Night Movie **NBC**
Movie Premiere (5.1) **HBO**

Cold Case **CBS**
Sunday Night Baseball **ESPN**
What's Coming
(first of the month) **Discovery**
American Dreams **NBC**

8:30

Whoopi **NBC**



9:00

Hack **CBS**
Law & Order reruns or
NBC Saturday Night Movie **NBC**
Championship Boxing (5.1)
(first of the month) **SHO**

Alias (5.1) **ABC**
CBS Sunday Night Movie **CBS**
Law & Order:
Criminal Intent **NBC**
The Sopranos/Six Feet Under
(5.1) **HBO**

10:00

The District **CBS**
Law & Order:
Special Victims Unit **NBC**



The Practice (5.1) **ABC**
Deadwood (5.1) **HBO**
Crossing Jordan **NBC**
Queer as Folk **SHO**



MON-FRI
11:35

The
Tonight
Show **NBC**

WHAT'S ON PBS

The loops are gone. Those HDTV clips that served as window dressing for your PBS station's digital TV signal are now relegated to the same video trash bin as previous test patterns. With the launch of the PBS HD channel on March 1, PBS became the first over-the-air broadcaster to provide round-the-clock widescreen high-def programming. (About 40% of the content is actually shot in high-def, while 60% is upconverted.)



New high-definition widescreen programs will air at the same time as the standard-definition version is shown on the analog PBS stations. During the rest of its schedule, PBS HD will offer its own mix of shows from such series as *Nova*, *Great Performances*, *Innovation*, *Nature*, *Masterpiece Theatre*, and *American Family* (above). — Michael Antonoff



* (5.1) = broadcast in Dolby Digital 5.1 surround sound